

LIME

mixing details



Application		Roundtower	Typical Mix	Approx. Coverage (Per 25k Bag)
Internal Plastering	Backing Coats (10mm)	NHL2	2.5 Sand: 1 Lime	8m ²
	Finishing Coat (3mm)	NHL2	2 Fine Silica sand: 1 Lime	26.5m ²
External Rendering	Coat (10mm)	NHL2	2.5 Sand: 1 Lime	8m ²
		NHL3.5	2.5 Sand: 1 Lime	8m ²
Pointing Rubble Stone		NHL2	2.5 Sand: 1 Lime	10m ²
		NHL3.5	2.5 Sand: 1 Lime	10m ²
Pointing Brickwork		NHL2	2.5 Sand: 1 Lime	16m ²
		NHL3.5	2.5 Sand: 1 Lime	16m ²
Harling/Wet Dash/Roughcast		NHL3.5	2.5 Sand/Aggregate: 1 Lime	7.5m ²
Slurry Coats		NHL2	2.5 Sand: 1 Lime	Refer to supplier
		NHL3.5	2.5 Sand: 1 Lime	Refer to supplier
Lime Concrete		NHL5	1.5 Mixed Aggregate: 1 Lime	Refer to supplier

The Natural Choice
From Roundtower

WE ALSO RECOMMEND THE USE OF NHL5 IN AREAS OF HIGH EXPOSURE (E.G. MARINE CONDITIONS)

Roundtower Lime, The Forge, Innishannon, County Cork, Ireland
Tel: ++353 (0)21 4776677 Fax: ++353 (0)21 4776063 Web: www.roundtowerlime.com
Technical helpline UK 01737 245554 Ireland 021 4776677



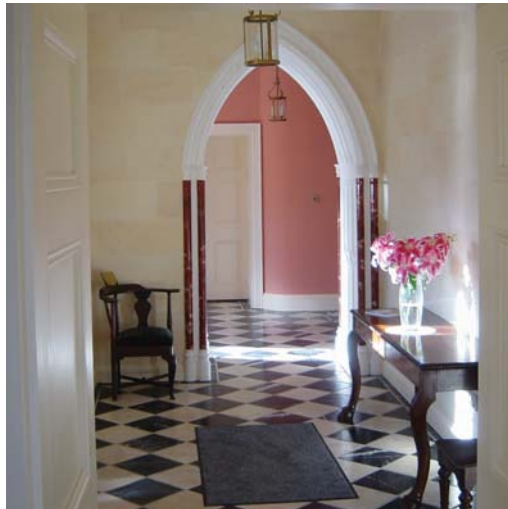
For mixing and technical data phone us or see our website

www.roundtowerlime.com



www.roundtowerlime.com

Why Lime ?



During the last 100 years artificial cements effectively took over from natural lime based mortars and plasters, to such a degree that by the 1990s virtually all construction was carried out using cement based materials.

In the late 1980's a forum of forward thinking experts discovered that the impermeable and inflexible nature of cement was the primary cause of damage to the original fabric.

Many old buildings have little or no foundations and may move slightly with the seasons. Soft lime mortars take up this slack and even have the ability to self heal small cracks over time.

It is essential that solid masonry structures breathe. A solid masonry building will take in moisture in certain weather conditions and then leave it go when the weather changes.

If the building is repointed or replastered in a cement based mortar, moisture will tend to get into the cracks mentioned above and will be unable to evaporate from the structure due to the impermeable nature of the material. This can lead to a build up of moisture within the wall, which can cause internal dampness.

The breathable nature of lime provides a healthy living environment and has good insulating properties.



Roundtower Lime Products

Lime Putty



Used mainly on historic buildings, soft masonry and where exact mortar matches are important.

■ Feebly Natural Hydraulic Lime



Used for internal plastering and externally where the masonry is made up of a soft material.

■ Moderately Natural Hydraulic Lime



Used mainly for masonry and external plaster works. The most popular material for new build work.

■ Moderately Natural Hydraulic Lime



Another NHL 3.5 with the exception that it has a higher 'whiteness' and is useful when colour matching mortars.

■ Eminently Natural Hydraulic Lime



This material is used in areas of high exposure such as in marine environments, wall copings, lime concrete etc.

